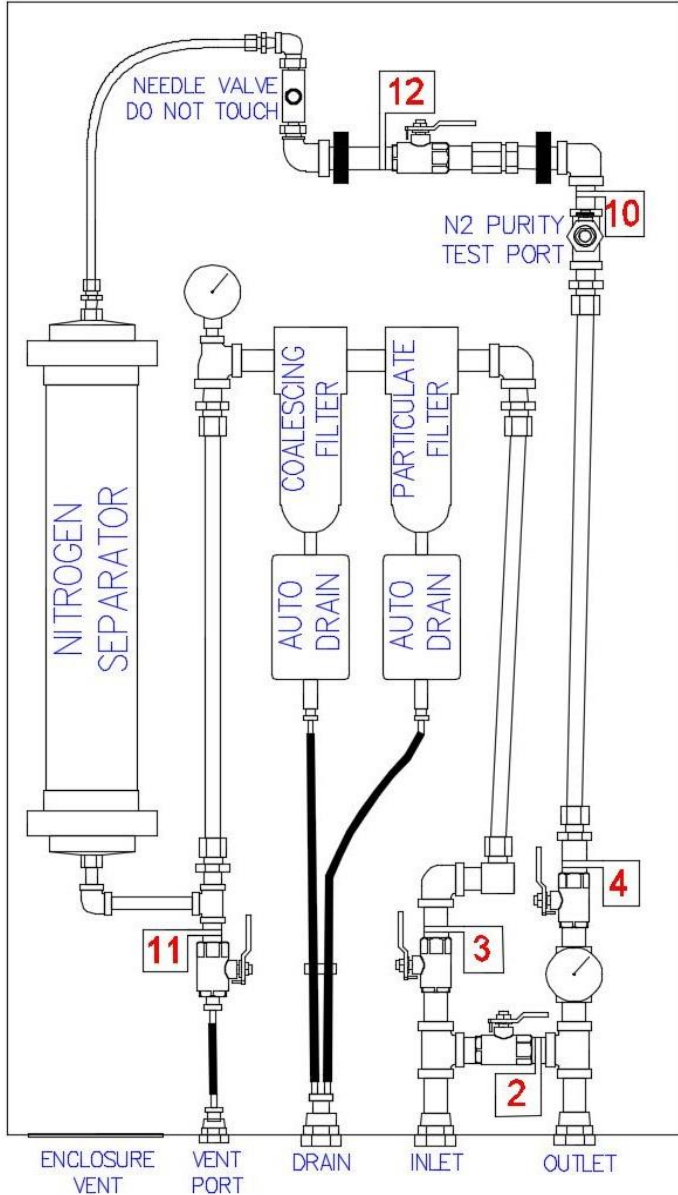


# OPERATING INSTRUCTIONS

## VALVES

DESIGNATION	NAME	NORMAL POSITION
<b>2</b>	Bypass Valve	CLOSED
<b>3</b>	Inlet Isolation Valve	OPEN
<b>4</b>	Outlet Isolation Valve	OPEN
<b>10</b>	Test Port Valve	CLOSED
<b>11</b>	Vent Valve	CLOSED
<b>12</b>	Shutoff Valve	OPEN



### TO PERFORM SPRINKLER SYSTEM 30 MINUTE "FAST-FILL" WITH AIR:

STEP	DESCRIPTION
1	Close Inlet Isolation Valve <b>3</b>
2	Close Outlet Isolation Valve <b>4</b>
3	Open Bypass Valve <b>2</b>
4	Apply pressure to inlet from compressor
5	Allow sprinkler system piping to fill with air. Supervisory pressure should be reached in 30 minutes or less.
6	Position all valves in NORMAL POSITION per VALVES table

### TO START UP NITROGEN-PAC™:

STEP	DESCRIPTION
1	Position all valves in NORMAL POSITION per VALVES table
2	Apply pressure to inlet from compressor

### TO SHUT DOWN NITROGEN-PAC™:

STEP	DESCRIPTION
1	Position all valves in NORMAL POSITION per VALVES table
2	Close Shutoff Valve <b>12</b>
3	Remove pressure from inlet
4	Vent pressure using Vent Valve <b>11</b> until pressure gages read ZERO

### TO SAMPLE NITROGEN PURITY AT TEST PORT:

STEP	DESCRIPTION
1	Attach sampling meter to Test Port
2	Open Test Port Valve <b>10</b>
3	Read N2 concentration on meter
4	Close Test Port Valve <b>10</b>
5	Detach sampling meter from Test Port

### TO SERVICE FILTERS:

STEP	DESCRIPTION
1	Start with all valves in NORMAL POSITION per VALVES table
2	Close Inlet Isolation Valves <b>3</b> and <b>4</b>
3	Vent pressure using Vent Valve <b>11</b> until pressure gages read ZERO
4	Perform filter service per instructions
5	Position all valves in NORMAL POSITION per VALVES table

### FOR MORE INFORMATION:

For more detailed information, refer to Manual P/N 30-NPMICM-000. Manual is available on website; [www.unitedfiresystems.com](http://www.unitedfiresystems.com)



1 Mark Road  
Kenilworth, NJ 07033 USA  
908-688-0300  
[www.unitedfiresystems.com](http://www.unitedfiresystems.com)