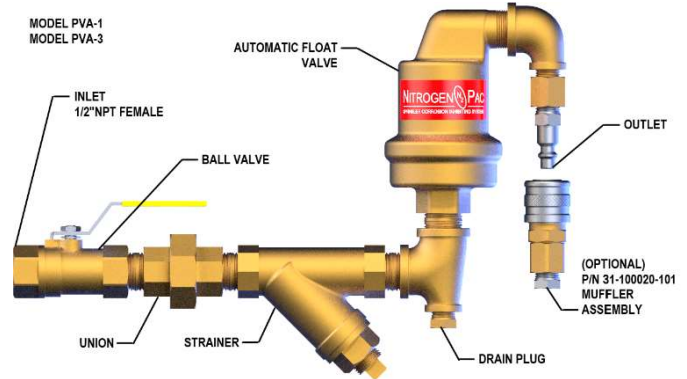




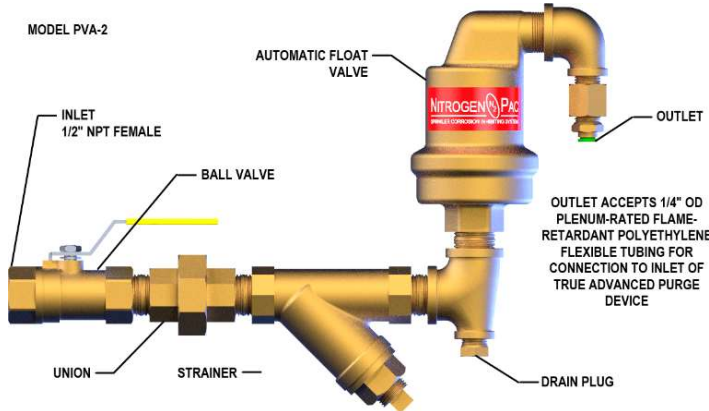
PURGE VENT ASSEMBLY – MODEL PVA

DESCRIPTION

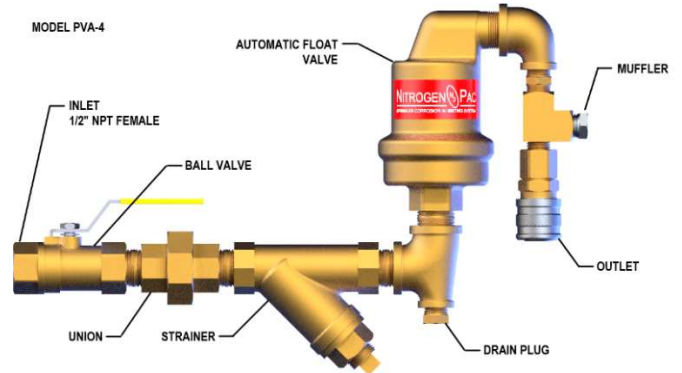
The **UNITED Fire Systems Purge Vent Assembly - Model PVA** is a device to purge air from the interior of preaction and deluge sprinkler system piping, allowing a **NITROGEN-PAC™** sprinkler corrosion inhibiting system to replace the air with nitrogen. The purge vent assembly is connected to the sprinkler piping in the vicinity of the inspector's test connection. A float valve prevents the escape of water from the device in the event of opening of the sprinkler valve and filling of the piping with water. A fixed orifice regulates the amount of gas leaving the piping. The purge vent also serves as the connection point for an N₂ analyzer to assess the percent nitrogen in the pipe. A drain plug allows periodic draining of accumulated water.



GENERAL ARRANGEMENT – FIGURE 1



GENERAL ARRANGEMENT – FIGURE 2

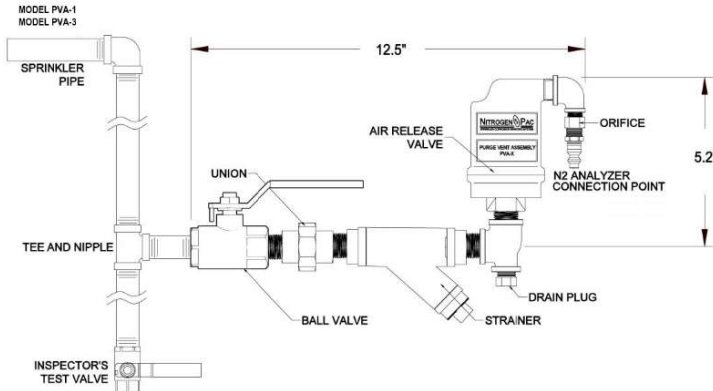
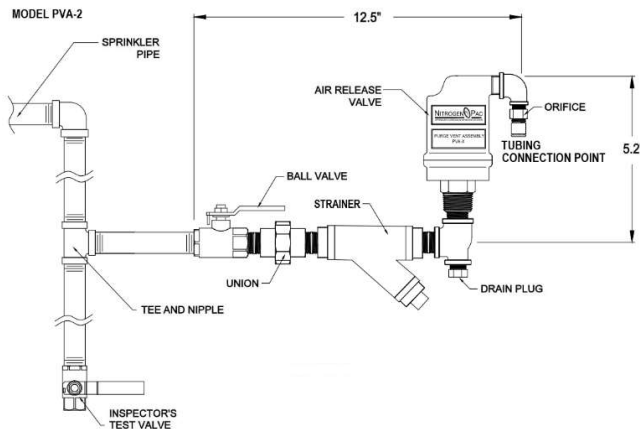
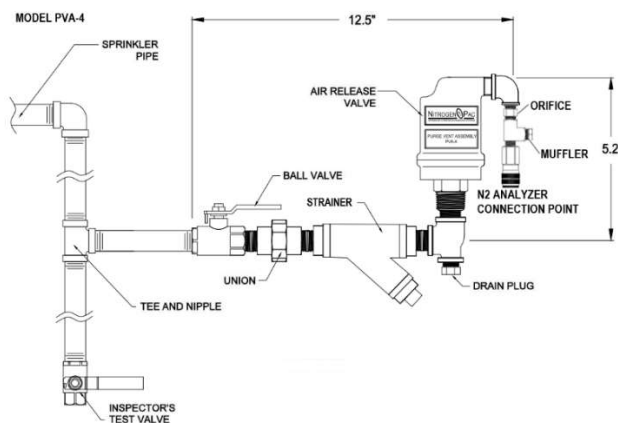


GENERAL ARRANGEMENT – FIGURE 3

TECHNICAL SPECIFICATIONS

Model	Orifice Diameter (inches)	Connection Point (Outlet) Type	N ₂ Measurement Method	Used With NITROGEN-PAC™ Model / Series	General Arrangement Figure	Installation Figure
PVA-1	0.016	Quick-Connect, Male	Hand-held N ₂ Analyzer, Model NA-1*	M Series	1	A
PVA-2	0.016	Push-To-Connect For Sampling Tubing	TRUE ADVANCED PURGE™ (TAP) Device**	Model SC-W Model SC-1 Model SC-2 M Series	2	B
PVA-3	0.010	Quick-Connect, Male	Hand-held N ₂ Analyzer, Model NA-1*	Model SC-1 Model SC-2	1	A
PVA-4	0.010	Quick-Connect, Female	Hand-held N ₂ Analyzer, Model NA-2***	Model SC-W	3	C

* Refer to Data Sheet UFS-316A ** Refer to Data Sheet UFS-317B ***Refer to Data Sheet UFS-316B

PURGE VENT ASSEMBLY – MODEL PVA

INSTALLATION – FIGURE A

INSTALLATION – FIGURE B

INSTALLATION – FIGURE C
NOTES

1. For proper operation, install units upright as shown in installation figures
2. Units are factory-assembled – DO NOT disassemble.
3. Union may be used for proper orientation of unit at installation.
4. See Figure 1. Optional muffler assembly P/N 31-10020-101 is available for attachment to **Model PVA-1** and **Model PVA-3** quick-connect outlet. Addition of this assembly should provide approximately 15 dB noise reduction at PVA location. Remove muffler assembly for attachment of hand-held N₂ analyzer.
5. Muffler is not necessary for **Model PVA-2**. Tubing carries air / nitrogen to **TRUE ADVANCED PURGE™ Model TAP-G3** location. **Model TAP-G3** is factory-equipped with exhaust mufflers.
6. **Model PVA-4** is factory-equipped with exhaust muffler.
7. Units include ball valve, union, strainer, drain plug, float valve, orifice, and N₂ analyzer connection point.
8. All units – Inlet is 1/2 inch NPT female.

UNITED Fire Systems

Division of United Fire Protection Corporation
 1 MARK ROAD
 KENILWORTH, NJ 07033 USA
 PHONE: 908-688-0300 FAX: 908-688-0218
www.unitedfiresystems.com

This literature is provided for informational purposes only. UNITED Fire Systems assumes no responsibility for the product's suitability for a particular application. The product must be properly applied to perform as intended.