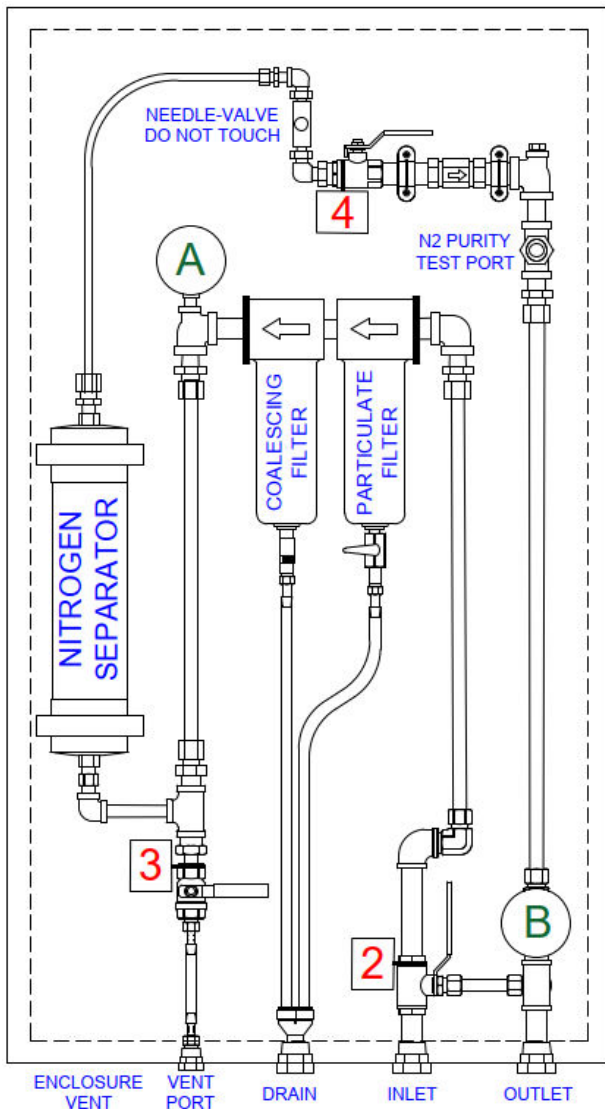


OPERATING INSTRUCTIONS

VALVES			
VALVE DESIGNATION	VALVE DESCRIPTION	NORMAL POSITION	BYPASS POSITION
2	BYPASS VALVE	OPEN (HANDLE FACING UP)	BYPASS (HANDLE FACING OUT)
3	VENT VALVE	CLOSED	CLOSED
4	SHUTOFF VALVE	OPEN	CLOSED



PERFORMING SPRINKLER SYSTEM 30 MINUTE INITIAL FILL WITH AIR	
STEP	DESCRIPTION
1	Move BYPASS VALVE (2) to the BYPASS position (handle facing out)
2	Apply pressure to inlet from compressor
3	Allow the sprinkler system to fill with air. Supervisory pressure should be reached in 30 minutes or less
4	Once supervisory pressure is reached, return all valves to the NORMAL POSITION per VALVES table

TO START UP NITROGEN-PAC™	
STEP	DESCRIPTION
1	Position all valves in NORMAL POSITION per VALVES table
2	Apply pressure to inlet from compressor

TO SHUT DOWN NITROGEN-PAC™	
STEP	DESCRIPTION
1	Position all valves to NORMAL POSITION per VALVES table
2	Move SHUTOFF VALVE (4) to the closed position
3	Remove pressure from inlet
4	Vent pressure using VENT VALVE (3) until all pressure gauges read ZERO

TO SAMPLE NITROGEN PURITY AT TEST PORT	
STEP	DESCRIPTION
1	Power ON Nitrogen Analyzer (Model NA-2)
2	Calibrate Nitrogen Analyzer using self-calibration features
3	Attach Nitrogen Analyzer to N2 PURITY TEST PORT
4	Read nitrogen concentration on Nitrogen Analyzer
5	Detach Nitrogen Analyzer from N2 PURITY TEST PORT

TO SERVICE FILTERS	
STEP	DESCRIPTION
1	Position all valves to BYPASS POSITION per VALVES table
2	Move SHUTOFF VALVE (4) to the CLOSED position
3	Vent pressure using VENT VALVE (3) until pressure gauge A reads ZERO
4	Perform filter service per instructions
5	Return all valves to the NORMAL POSITION per VALVES table

FOR MORE INFORMATION	
For more detailed information, refer to Manul P/N 30-NPMICM-0G2. Manual is available on our website; www.unitedfiresystems.com	

☐ MODEL NGM-G2-5 (2980 GAL CAPACITY)

☐ MODEL NGM-G2-10 (5000 GAL CAPACITY)